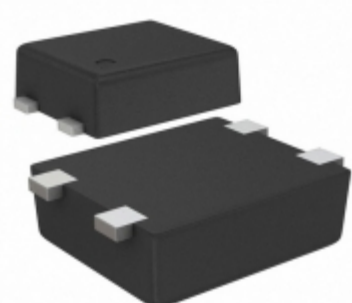


## S-80947CLPF-G7HTFG



**SII** SII Semiconductor Corporation

**Part Number:** [S-80947CLPF-G7HTFG](#)

**Manufacturer:** [SII Semiconductor Corporation](#)

**Description:** IC VOLT DETECTOR 4.7V SNT-4A

**Data sheet:** [S-809xxC Series](#)

**RoHS Status:** Lead free / RoHS Compliant

**Ship From:** Hong Kong

**Shipment Way:** DHL/Fedex/TNT/UPS/EMS

Images are for reference only.  
See Product Specifications for product details.  
**Buy S-80947CLPF-G7HTFG with confidence from Component-World.HK, 1 Year Warranty**

[Request For Quotation](#)

### PRODUCT PARAMETER

<b>Part Number</b>	S-80947CLPF-G7HTFG	<b>Manufacturer</b>	<a href="#">SII Semiconductor Corporation</a>
<b>Description</b>	IC VOLT DETECTOR 4.7V SNT-4A	<b>Lead Free Status / RoHS Status</b>	Lead free / RoHS Compliant
<b>Quantity Available</b>	4921 pcs	<b>Data sheet</b>	<a href="#">S-809xxC Series</a>
<b>Category</b>	<a href="#">Integrated Circuits (ICs)</a>	<b>Voltage - Threshold</b>	4.7V
<b>Type</b>	Voltage Detector	<b>Supplier Device Package</b>	SNT-4A
<b>Series</b>	S-809xxC	<b>Reset Timeout</b>	18 ms Minimum
<b>Reset</b>	Active Low	<b>Packaging</b>	Tape & Reel (TR)
<b>Package / Case</b>	4-SMD, Flat Leads	<b>Output</b>	Push-Pull, Totem Pole
<b>Operating Temperature</b>	-40°C ~ 85°C (TA)	<b>Number of Voltages Monitored</b>	1
<b>Mounting Type</b>	Surface Mount	<b>Moisture Sensitivity Level (MSL)</b>	1 (Unlimited)
<b>Lead Free Status / RoHS Status</b>	Lead free / RoHS Compliant	<b>Detailed Description</b>	Supervisor Push-Pull, Totem Pole 1 Channel SNT-4A

Component-World.com is a Reliable Stocking Distributor of Electronic Components. We specialize in all SII Semiconductor Corporation series electronic components. We have 4921 pieces of SII Semiconductor Corporation S-80947CLPF-G7HTFG in stock available now. Request a quote from electronics components distributor at Component-World.com, our sales team will contact you within 24 hours.  
RFQ Email: [info@Components-World.com](mailto:info@Components-World.com)

### RELATED PRODUCTS

	<b>Part#:</b> <a href="#">S-80946CNNB-G9GT2G</a> <b>Description:</b> IC VOLT DETECTOR 4.6V SC-82AB	<b>Manufacturers:</b> <a href="#">SII Semiconductor Corporation</a>	<a href="#">RFQ</a>
	<b>Part#:</b> <a href="#">S-80946CNPF-G9GTFG</a> <b>Description:</b> IC VOLT DETECTOR 4.6V SNT-4A	<b>Manufacturers:</b> <a href="#">SII Semiconductor Corporation</a>	<a href="#">RFQ</a>
	<b>Part#:</b> <a href="#">S-80948CLMC-G7JT2U</a> <b>Description:</b> IC VOLT DETECTOR 4.8V SOT23-5	<b>Manufacturers:</b> <a href="#">SII Semiconductor Corporation</a>	<a href="#">RFQ</a>
	<b>Part#:</b> <a href="#">S-80947CLNB-G7HT2G</a> <b>Description:</b> IC VOLT DETECTOR 4.7V SC-82AB	<b>Manufacturers:</b> <a href="#">SII Semiconductor Corporation</a>	<a href="#">RFQ</a>
	<b>Part#:</b> <a href="#">S-80947CLPF-G7HTFU</a> <b>Description:</b> IC VOLT DETECTOR 4.7V SNT-4A	<b>Manufacturers:</b> <a href="#">SII Semiconductor Corporation</a>	<a href="#">RFQ</a>
	<b>Part#:</b> <a href="#">S-80947CNNB-G9HT2G</a> <b>Description:</b> IC VOLT DETECTOR 4.7V SC-82AB	<b>Manufacturers:</b> <a href="#">SII Semiconductor Corporation</a>	<a href="#">RFQ</a>
	<b>Part#:</b> <a href="#">S-80946CNNB-G9GT2U</a> <b>Description:</b> IC VOLT DETECTOR 4.6V SC-82AB	<b>Manufacturers:</b> <a href="#">SII Semiconductor Corporation</a>	<a href="#">RFQ</a>
	<b>Part#:</b> <a href="#">S-80946CNPF-G9GTFU</a> <b>Description:</b> IC VOLT DETECTOR 4.6V SNT-4A	<b>Manufacturers:</b> <a href="#">SII Semiconductor Corporation</a>	<a href="#">RFQ</a>
	<b>Part#:</b> <a href="#">S-80947CNMC-G9HT2G</a> <b>Description:</b> IC VOLT DETECTOR 4.7V SOT23-5	<b>Manufacturers:</b> <a href="#">SII Semiconductor Corporation</a>	<a href="#">RFQ</a>
	<b>Part#:</b> <a href="#">S-80947CNNB-G9HT2U</a> <b>Description:</b> IC VOLT DETECTOR 4.7V SC-82AB	<b>Manufacturers:</b> <a href="#">SII Semiconductor Corporation</a>	<a href="#">RFQ</a>
	<b>Part#:</b> <a href="#">S-80947CLMC-G7HT2U</a> <b>Description:</b> IC VOLT DETECTOR 4.7V SOT23-5	<b>Manufacturers:</b> <a href="#">SII Semiconductor Corporation</a>	<a href="#">RFQ</a>
	<b>Part#:</b> <a href="#">S-80947CNPF-G9HTFG</a> <b>Description:</b> IC VOLT DETECTOR 4.7V SNT-4A	<b>Manufacturers:</b> <a href="#">SII Semiconductor Corporation</a>	<a href="#">RFQ</a>
	<b>Part#:</b> <a href="#">S-80948CLNB-G7JT2G</a> <b>Description:</b> IC VOLT DETECTOR 4.8V SC-82AB	<b>Manufacturers:</b> <a href="#">SII Semiconductor Corporation</a>	<a href="#">RFQ</a>
	<b>Part#:</b> <a href="#">S-80946CNMC-G9GT2U</a> <b>Description:</b> IC VOLT DETECTOR 4.6V SOT23-5	<b>Manufacturers:</b> <a href="#">SII Semiconductor Corporation</a>	<a href="#">RFQ</a>
	<b>Part#:</b> <a href="#">S-80946CNMC-G9GT2G</a> <b>Description:</b> IC VOLT DETECTOR 4.6V SOT23-5	<b>Manufacturers:</b> <a href="#">SII Semiconductor Corporation</a>	<a href="#">RFQ</a>
	<b>Part#:</b> <a href="#">S-80948CLMC-G7JT2G</a> <b>Description:</b> IC VOLT DETECTOR 4.8V SOT23-5	<b>Manufacturers:</b> <a href="#">SII Semiconductor Corporation</a>	<a href="#">RFQ</a>
	<b>Part#:</b> <a href="#">S-80947CLMC-G7HT2G</a> <b>Description:</b> IC VOLT DETECTOR 4.7V SOT23-5	<b>Manufacturers:</b> <a href="#">SII Semiconductor Corporation</a>	<a href="#">RFQ</a>
	<b>Part#:</b> <a href="#">S-80947CLNB-G7HT2U</a> <b>Description:</b> IC VOLT DETECTOR 4.7V SC-82AB	<b>Manufacturers:</b> <a href="#">SII Semiconductor Corporation</a>	<a href="#">RFQ</a>
	<b>Part#:</b> <a href="#">S-80947CNPF-G9HTFU</a> <b>Description:</b> IC VOLT DETECTOR 4.7V SNT-4A	<b>Manufacturers:</b> <a href="#">SII Semiconductor Corporation</a>	<a href="#">RFQ</a>
	<b>Part#:</b> <a href="#">S-80947CNMC-G9HT2U</a> <b>Description:</b> IC VOLT DETECTOR 4.7V SOT23-5	<b>Manufacturers:</b> <a href="#">SII Semiconductor Corporation</a>	<a href="#">RFQ</a>

### Related keywords for S-80947CLPF-G7HTFG

SII Semiconductor Corporation S-80947CLPF-G7HTFG	S-80947CLPF-G7HTFG distributor	S-80947CLPF-G7HTFG supplier	S-80947CLPF-G7HTFG price
buy S-80947CLPF-G7HTFG	SII Semiconductor Corporation S-80947CLPF-G7HTFG	S-80947CLPF-G7HTFG download datasheet	S-80947CLPF-G7HTFG stock
		S-80947CLPF-G7HTFG datasheet	